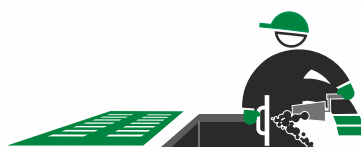


MaltaRapid^{plus}

HIGH-RESISTANCE
FAST-HARDENING
BLACK FIBRATED
TECHNICAL MORTAR
FOR USE WITHOUT FORMWORK



NO NEED
FOR A FORMWORK



FIBRATED

for increased
strength

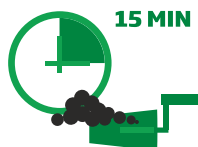


BLACK COLOUR

for uniformity
with asphalt



WORKABILITY



15 MIN

OPENING
TO LIGHT TRAFFIC



1 HOUR
GO!

OPENING
UP TO HEAVY TRAFFIC

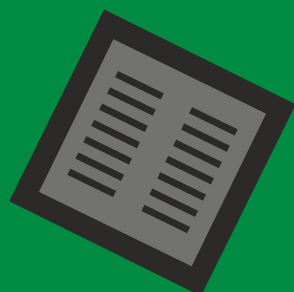


2 HOURS
GO!

HIGH
RESISTANCE



R4



**SPECIFICALLY
DESIGNED
FOR MANHOLE
COVERS**

Manufactured and marketed by:



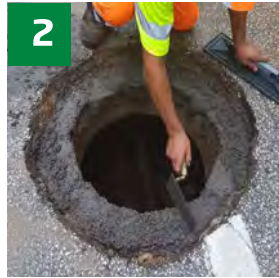
CIS - TRENTO

FIELD OF APPLICATION



1

1 Manhole cover traps



2

2 Manholes



3

3 Signage and street furniture



4

4 Curb stones

Fast and ultra-resistant repositioning

Renovation of the walls without having to formwork

Fast execution of plinths and foundations

Repair, positioning and fixing

INSTALLATION PHASES

1

**DEMOLITION
AND CLEANING**

Make clean cuts in the road surface and demolish using special equipment. Remove moving and damaged parts until a stable support is reached. Wet the installation site.



2

**PREPARATION
OF MIXED MORTAR
RAPID PLUS**

Mix the product with water using a trowel, shovel or electric mixer to moisturise the binder evenly. For fast and economical production, we recommend the use of our BetonMix 150 petrol mixer.

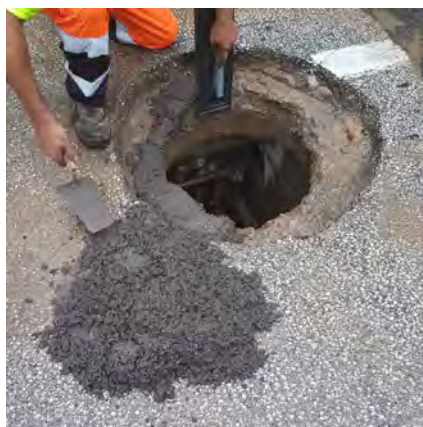


3

WALL/SUPPORT
RENOVATION
WITHOUT
FORMWORK

Spread MaltaRapid Plus evenly to create a supporting base for the manhole cover.

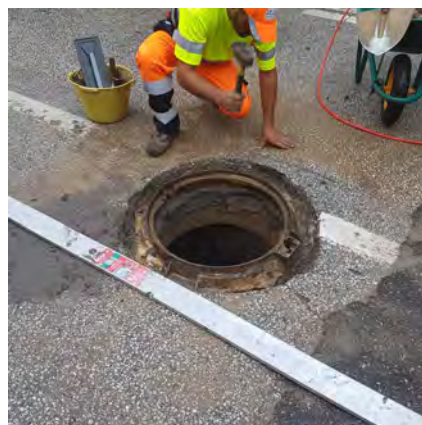
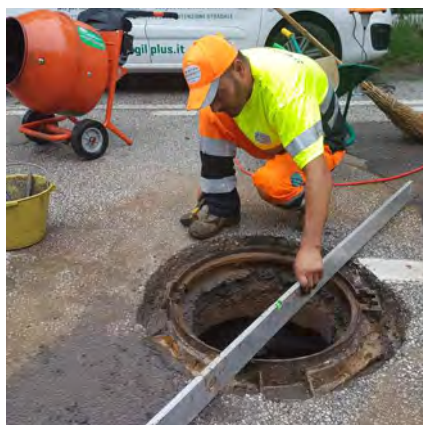
The product has 15 minutes of workability and no need for formwork.



4

POSITIONING
AND LEVELLING
OF THE FRAME

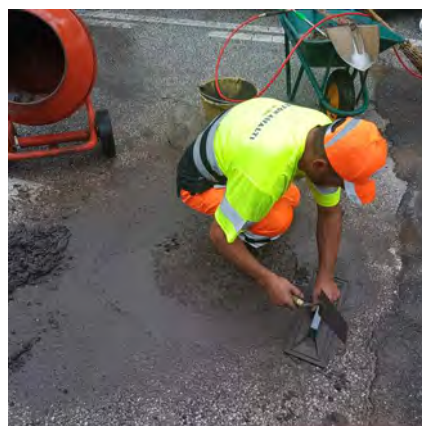
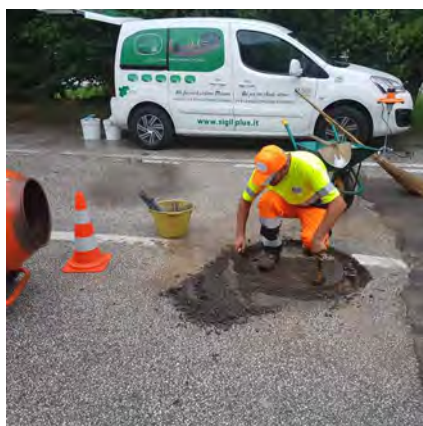
Position the manhole cover and adjust the height to ensure that it is flush with the road surface.



5

CROWNING
AND SURFACE
FINISH

Fill in the perimeter crowning up to the level of the road surface. MaltaRapid Plus is camouflaged with asphalt because of its black colour and fibrated composition. After one hour, open to light traffic and remove the signs.



6

CLEANING OF EQUIPMENT

Carefully clean the equipment and instruments used.
BetonTank100 allows you to work and clean the equipment and tools used independently and effectively.



SPECIFIC EQUIPMENT FOR SALE



CONCRETE MIXER TM 150
BLAST CONCRETE MIXER



BETON TANK 100
PORTABLE WATER TANK WITH 12V PUMP
AND PRESSURE SWITCH

TYPE OF FINISHING OF THE CROWNING

FLUSH FINISH

MaltaRapid^{plus}



FLUSH FINISH

KaltAsphalt^{plus}

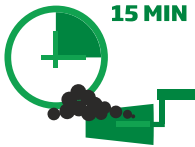






FLUSH FINISH AND PERIMETER SEALING OF THE CROWNING

SigilRapid^{plus}



MALTARAPID PLUS - CHARACTERISTICS

WORKABILITY  15 MIN	OPENING TO LIGHT TRAFFIC  1 HOUR GO!	OPENING UP TO HEAVY TRAFFIC  2 HOURS GO!	HIGH RESISTANCE R4 
---	--	---	---

TECHNICAL DATA SHEET		<div>Mixing water</div> <div>3 LITRES</div> <div>PER 25 KG BAG</div>	
Maltarapid plus is a product manufactured in accordance with the following standards EN 124-1:2015, effective as of April 2017. appendix F - Recommendations for the installation of manhole covers.		Tests in accordance with the applicable laws and regulations 1504-3	
		UNIT OF MEASUREMENT	VALUE
Maximum particle size of the aggregates		mm	4
Density of fresh mortar		kg/m ³	2300/2600
Volumetric increase in 1 d			+ 0,5%
Working time		min	15
Compressive strength (in KiloNewton)		K/N	> 1,5
after 30 minutes			> 8,0
after 1 hour			> 35,0
after 24 hours			> 50,0
after 28 days			
Characteristic compressive strength at end of hardening process		N/mm ²	> 50,0

Lasting and consistent benefits over time 	Resistance to salt and frost 	Resistant to acids and hydrocarbons 
--	---	--

MaltaRapid^{plus}

**HIGH-RESISTANCE
FAST-HARDENING
TECHNICAL MORTAR**

has been subjected to various tests
by certified Italian and foreign laboratories.



www.betonasfalti.it

SPECIFICATION ITEM

Supply of black thixotropic, quick-hardening, shrinkage-compensated mortar reinforced with polyethylene fibres in accordance with standard EN 124-1-2015 Appendix F. Supplied in 25kg paper bags, ready to use on site after mixing with 12% water, with such plasticity as not to require a formwork up to 10/15 cm thick. Suitable for fixing road signs, street furniture, cords,


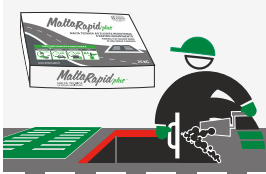

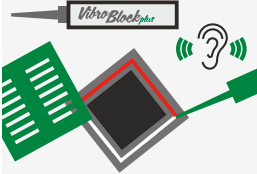




manhole covers and renovating wells, small foundations and concrete structures.

The product can also be used at low temperatures.

Compressive strength, minimum of 8 N/mm² at 1 hour, 12 N/mm² at 2 hours and 35 N/mm² at 24 hours, resistant to frost and thaw, aggressive agents and hydrocarbons.

Minimum storage of six months.

COMPLETE RANGE OF PROFESSIONAL PRODUCTS FOR ROAD MAINTENANCE

<i>plus</i> KALT ASPHALT	<i>plus</i> MALTA RAPID	<i>plus</i> SIGIL RAPID	<i>plus</i> VIBRO BLOCK
			
HOLES	MANHOLE COVER	JOINTS	NOISE
			

HOT ROAD-SEALING SERVICE



CLEANING INJECTION ROUGHENING

Manufactured and marketed by:



CIS - TRENTO
Phone +39 0463 533252
Mobile +39 338 801 5570
vendite@betonASFALTI.it
www.betonASFALTI.it

DEALER